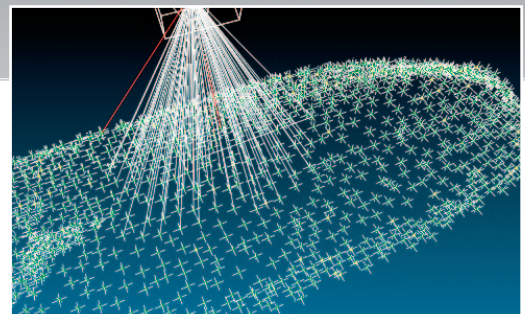
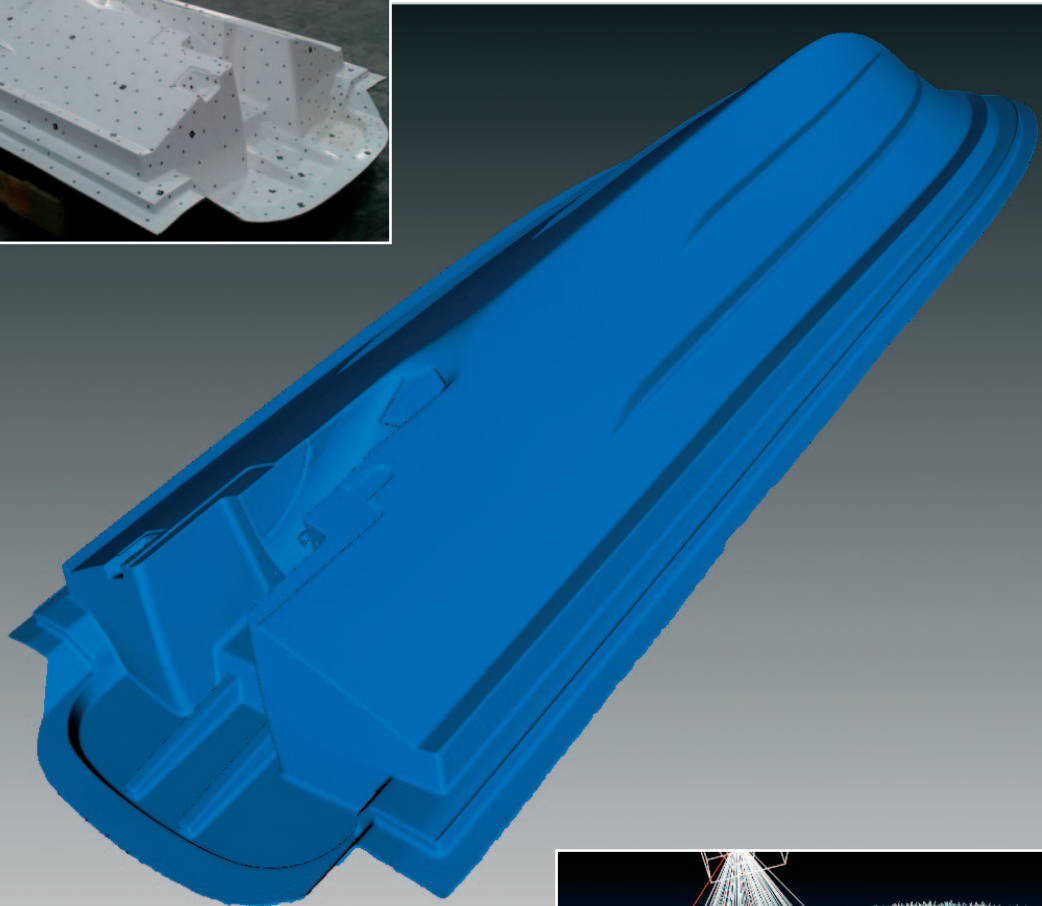
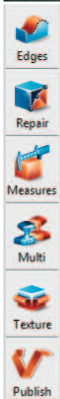
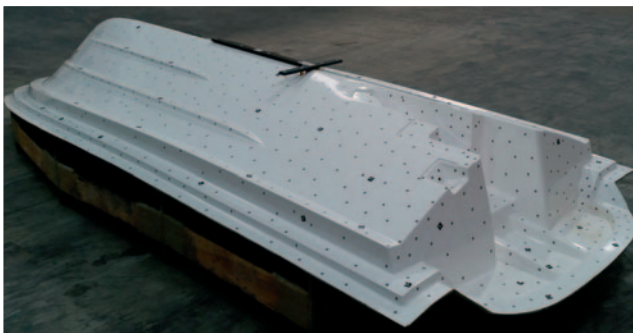


3D SCANNING

CREATING ACCURATE CAD MODELS
OF REAL LIFE OBJECTS



ADVANCED STAINLESS
• ENGINEERING •



3D SCANNING REVERSE ENGINEERING,
SURVEYING FOR PRODUCT DEVELOPMENT,
3D PHOTOGRAPHY, 3D PRINTING

3D SCANNING

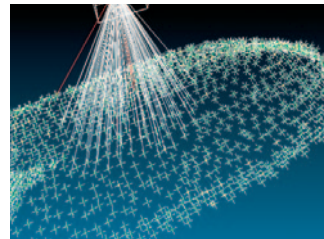


USING A COMBINATION OF PHOTOGRAMMETRY AND WHITE LIGHT 3D SCANNING WE ARE ABLE TO SCAN OBJECTS TO VERY HIGH DEFINITION AND ACCURACY.

ONCE THE OBJECT IS SCANNED, THE DATA CAN BE EXPORTED AND USED IN ALL MAJOR 3D CAD SYSTEMS.

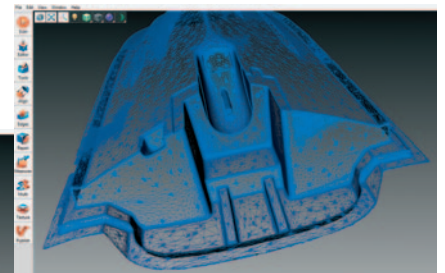
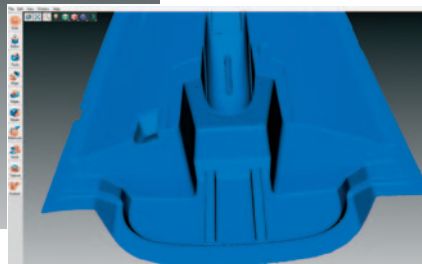
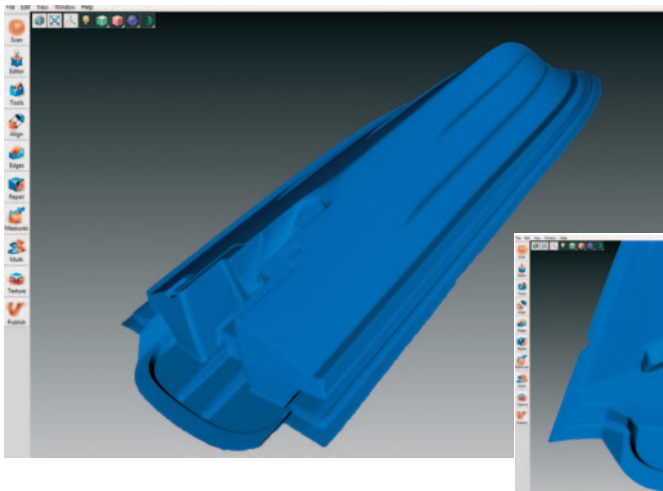
For large and high accuracy scans photogrammetry markers and targets are applied to the object being scanned.

Using specialised software the three dimensional position of the markers is recorded with a point accuracy up to 0.03mm and a point cloud is created.



The point cloud is then used to reference the white light scanning to create highly detailed scans.

Surface Texture can also be captured and rendered onto the 3d model, this can give a 3D photograph effect.



COONEY MARINE INTERNATIONAL
TELFORD WAY
KETTERING
NORTHANTS
NN16 8UN
TEL: 01536 484481
FAX: 01536 411580
EMAIL: sales@cooneymarine.co.uk
WEB: www.cooneymarine.co.uk

